

**McCloskey**  
INTERNATIONAL

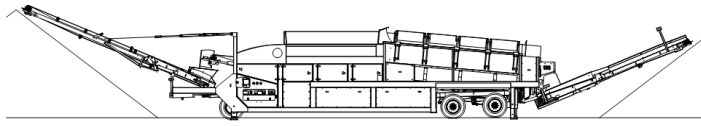
**621-S2** Feb. 2012, Issue 003

# ***SPECIFICATIONS***



## ***McCloskey*** ***621-S2***





**621-S2** Feb. 2012, Issue 003

### **DESCRIPTION**

Heavy duty mobile Trommel with following features:

- 6x21' heavy duty Trommel drum.
- 174Hp Cat engine.
- Wheel mobile or hydraulic raise/lower track bogie system.
- Integrated hydraulic folding stockpiling conveyors.
- Remote control radial conveyor
- Fast on site setup time – 10 minutes.

### **DIMENSIONS AND WEIGHTS (Wheeled Model 621-RE)**

Length - transport	18.14m (59' – 6")
Width - Wheeled Model (RE)	2.59m (8' – 6")
Height - transport	4.15m (13' - 6")
Weight Wheeled Model (RE)	23,400 Kgs (51,500 lbs)

### **DIMENSIONS AND WEIGHTS (Wheel-Track Model 621-REWT)**

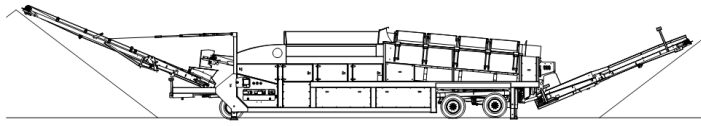
Length - transport	18.14m (59' – 6")
Width - Tracked Model (REWT)	2.92m (9' – 7")
Height - transport	4.15m (13' - 6")
Weight Tracked Model (REWT)	33,700 Kgs (74,500 lbs) Estimated

### **CAPACITIES**

Diesel tank capacity	1210 L (320 US gal) Wheeled (RE) 680 L (180 US gal) Wheel Track (REWT)
Hydraulic tank capacity	954 L (252 US gal)
Hopper Capacity	4.2 m <sup>3</sup> (5.5 yd <sup>3</sup> )

### **FEED CONVEYOR**

Belt width	1050mm (42")
Belt spec	Plain 630/4 6+3
Drive drum dia.	323mm (12.75")
Tail drum dia.	320mm (12.5")
Gearbox	Bonfig 805 W2
Gearbox ratio	24.2
Gearbox torque	7000Nm cont, 12500Nm max
Motor	Danfoss OMSS315
Flow rate	84.8 Lpm (22.4 US gpm)
Adjustable speed	YES
Maximum speed	10.1 rpm



**621-S2** Feb. 2012, Issue 003

**FINES CONVEYOR**

Belt width	1050mm (42")
Belt spec	Plain 400/3 4+2
Drive drum dia.	285mm (11.2")
Tail drum dia.	320mm (12.5")
Motor	White RE32
Flow rate	114.9 Lpm (22.4 US gpm)
Maximum speed	143.7 rpm

**RADIAL CONVEYOR**

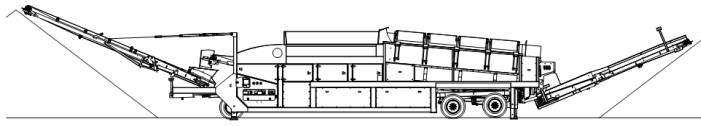
Stockpile height	4870mm (15' - 6")
Belt width	1050mm (42")
Belt spec	Plain - 400/3 4+2
Drive drum dia.	285mm (11.2")
Tail drum dia.	270mm (10.6")
Motor	White RE32
Flow rate	114.9 Lpm (22.4 US gpm)
Maximum speed	143.7 rpm

**TAIL CONVEYOR**

Stockpile height	3350mm (11')
Belt width	914mm (36")
Belt spec	Chevron - 315/3 3+1.5
Drive drum dia.	285mm (11.2")
Tail drum dia.	270mm (10.6")
Motor	White RE32
Flow rate	83.1 Lpm (18.3 US gpm)
Maximum speed	129.6 rpm
Adjustable speed	YES

**TROMMEL (DRUM)**

Dimensions	1830mm x 6400mm (6' x 21')
Screening Area	27.5 m <sup>2</sup> (296 ft <sup>2</sup> )
Trommel angle	5 deg
Trommel motor	Poclain MSE02 (22.2cc/rev)
Drive system	Direct drive with 18x7 rubber wheels
Hydraulic flowrate	207.8 Lpm (45.71 US gpm)
Trommel speed	30 rpm (Maximum)
Adjustable speed	YES (10 to 30 Rpm)
Longitudinal Trommel Supports	5 angle type Lifters
Cleaning Brushes	Ground adjustable Ø16x 50" Polyester Brushes



**621-S2** Feb. 2012, Issue 003

**POWERUNIT AND HYDRAULICS**

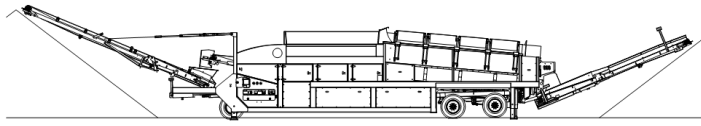
Engine	CAT C6.6 (Tier III)
Engine power	174 HP
Engine speed	2200 rpm
Flywheel Pump 1	David Brown R5,000
PTO Pump 1	Vicker's V20
Total system flow	494 L (108.8 US Gpm)
Hydraulic tank capacity	1145 L (252 US Gals)
Hydraulic tank ratio	2.32 : 1
Hydraulic Oil cooler	YES

**ELECTRICS**

Emergency stops	4 off, all 4 corners of the machine
Chassis cabling	Armored cable
Start Siren	YES - 10 sec delay
Engine shutdowns:	Low oil pressure High water temp Air filter blockage (selectable) Fuel contamination Low hydraulic tank level
Engine room light	YES
Remote radial conveyor	YES - 4 function movement
Radio control tracks	YES - Hetronic system
Pendant track control	YES - plugged in by control panel

**TRACKS**

Width	500mm (19.7")
Length	3710mm (12'-2") crs
Height	739mm (29.4")
Gearbox	Bonfiglioli 707
Ratio	122:1
Motor	Rexroth 63
Speed max	1.5 Kph (0.9 Mph)
Flow rate	114.9 Lpm (22.4 US gpm)
Attachment to chassis	Bolt on for quick change



**621-S2** Feb. 2012, Issue 003

**WHEELS (RE model)**

Axles	2 off (Tandem)
Width	2590mm (8' - 6")
Axle centers	1830mm (6' - 0")
Wheels	Super Single 315/80R22.5 (4 tires)
Brakes	YES
Spring suspension	YES
Mudguards	YES
ABS	OPTION

**WHEELS (REW model)**

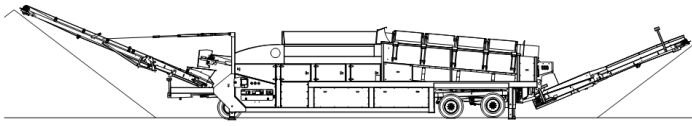
Axles	3 off (Tri-axle)
Width	2921mm (9' - 7")
Axle centers	1244mm (4' - 1")
Wheels	dual 11/R22.5 (12 tires)
Brakes	YES
Spring suspension	YES
Mudguards	YES
ABS	OPTION

**OPTIONS**

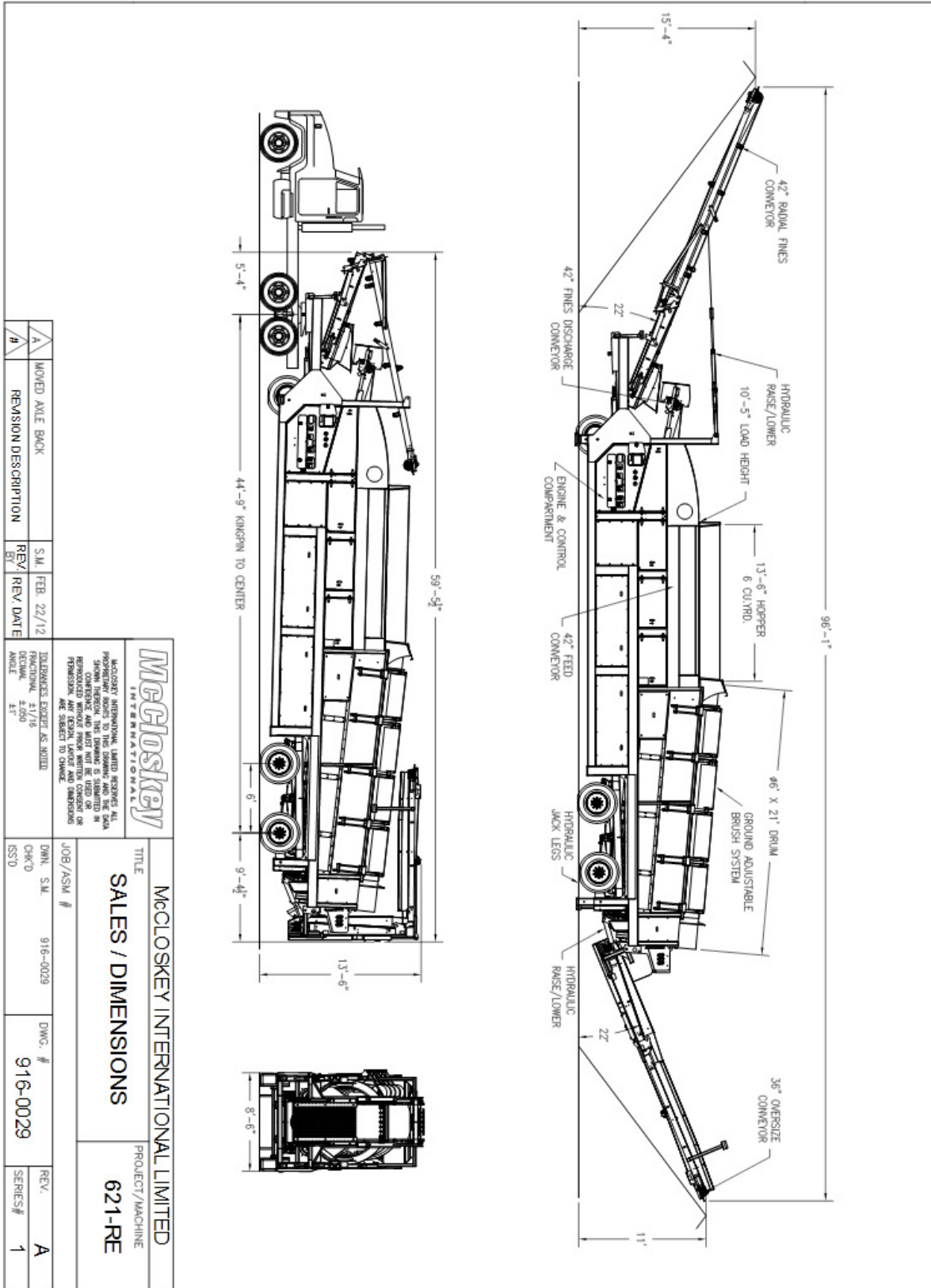
- Hydraulic raise lower track bogie system
- Single or double deck live head
- Hydraulic tipping grid
- Double brushes
- Auto reversing fan
- Auxiliary Hydraulic Circuit
- Punch plate screens
- Remote Feeder on/off

**SAFETY FEATURES**

- External belt alignment points
- External grease points
- Engine safety shutdown systems
- Full safety guarding for nip points



**621-S2** Feb. 2012, Issue 003



REV	REV DATE	S.M.	REV
A	Moved Ayle Back	FEB. 22/12	
#	REVISION DESCRIPTION	REV	REV DATE

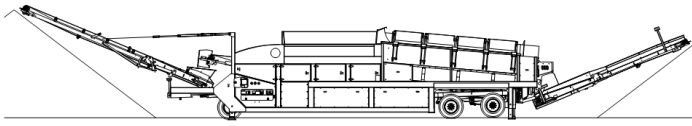
TOLERANCES EXCEPT AS SHOWN:  
 FINISHES: DECIMAL 1/16  
 DECIMAL 1/32  
 ANGLES 1/2°

**McCloskey**  
INTERNATIONAL

McCloskey International Limited reserves all rights in and to the design and construction of this machine. No part of this machine may be reproduced without the written consent of McCloskey International Limited. All dimensions are subject to change.

TITLE		McCloskey INTERNATIONAL LIMITED	
SALES / DIMENSIONS		PROJECT/MACHINE	
JOB/ASM #		621-RE	
DWG. S.M.	916-0029	DWG. #	916-0029
CHK'D	SS'D	REV.	A
		SERIES#	1





**McCloskey**  
INTERNATIONAL

**621-S2** Feb. 2012, Issue 003

